

# AGRICULTURAL BUSINESS INNOVATION SURVEY 2022-2024



For a more innovative South Africa

\*INCLUDING FARMING, FORESTRY AND FISHERIES



Science, Technology  
and Innovation  
Statistics South Africa



CeSTII  
Centre for Science, Technology  
& Innovation Indicators

**ΣKairos**  
Research & Consulting



“The extent to which we thrive as a country will depend on accelerating the South African development project, an endeavour that will be influenced by how we ready ourselves for the dramatic changes coming to the world we know. Science, technology and innovation are at the heart of these preparations.”\*

**Ms MT Kubayi-Ngubane,**  
Former MP Minister of Science and  
Technology March, 2019

---

\* [https://www.dsti.gov.za/images/2019/FINAL-White-Paper-to-Cabinet\\_11-March-2019.pdf](https://www.dsti.gov.za/images/2019/FINAL-White-Paper-to-Cabinet_11-March-2019.pdf)

Whether you're starting out, scaling up or steaming ahead, innovation is the creative engine that powers the future success of businesses in our country. It can also help to build up entire communities.

All across the world governments are spearheading efforts to measure innovation in their economies. Why? Because it is by working *with* businesses and innovators that they can figure out what policies are helping out or where improvements are needed. Innovation data are vital for a more innovative South Africa.

South Africa's third Agricultural Business Innovation Survey, covering the period 2022–2024, will examine the innovation activities in approximately 2 114 agricultural firms – from small to very large, and across a range of agricultural sub-sectors. In the same way that a company's financial statement is an essential tool for performance monitoring and planning, the Agricultural Business Innovation Survey will deliver a national picture about what innovations are taking place, how they occur at firm-level, and what can be done to enhance innovation capacity in this vital sector.

Your participation matters.



# The story of the South African Agricultural Business Innovation Survey

Effective policy- and decision-making requires high quality evidence. The Department of Science, Technology and Innovation (DSTI), as a partner within the national statistics system, is mandated to oversee the collection of statistics on science, technology and innovation. The Centre for Science, Technology and Innovation Indicators at the Human Sciences Research Council performs national business innovation surveys on behalf of the DSTI. The Agricultural Business Innovation Survey contributes evidence for policymaking in this critical economic sector.

These surveys are based on the recommended methodology outlined in the Oslo Manual, an international best practice guide. Surveys require a large and dedicated team of fieldworkers, information technologists, data analysts, and statisticians. We rely on the time and energy of our respondents to provide accurate data timeously, so results can be released as quickly as possible.

## Your cooperation matters.



### 1st Survey 2016–2018

- **Coverage:** Agriculture (includes farming of crops, animals or mixed), Forestry, Fisheries



### 2nd Survey 2019–2021

- **Coverage:** Agriculture (includes farming of crops, animals or mixed), Forestry, Fisheries



### 3rd Survey 2022–2024

- **Coverage:** Agriculture (includes farming of crops, animals or mixed), Forestry, Fisheries



# STATE OF AGRICULTURAL INNOVATION IN SOUTH AFRICA\*

## 2019

WE SURVEYED BUSINESSES IN



FISHERIES



FORESTRY



AGRICULTURE

(includes farming of crops, animals or mixed)

WHAT WE  
FOUND: **67%** of SA  
BUSINESSES were



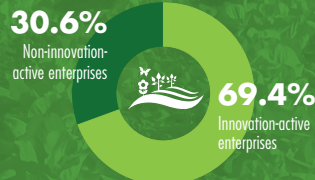
## INNOVATION ACTIVE

### FREQUENCY OF INNOVATION ACTIVITY

Most agricultural enterprises took technological, organisational or commercial steps to implement an innovation.

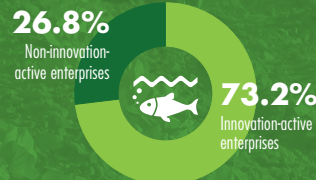
#### AGRICULTURE

Nearly three quarters (69.4%) of enterprises in the agriculture sub-sector were **innovation-active**



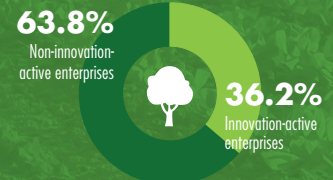
#### FISHERIES

Fisheries reported the **highest levels of innovation**



#### FORESTRY

Forestry, a mature 'low-tech' industry, had the **least innovation activity**



### TOP 5 EFFECTS OF INNOVATION ON BUSINESS GOALS

1

Improvement in soil fertility

2

Increased output (eg. crop yield / livestock / farmed birds (turkeys, chickens, pigeons, geese), fish, etc.)

3

Reached new markets

4

Increased revenue

5

Increased water preservation

\*Based on results of the Agricultural Business Innovation Survey 2019–2021. Keen to learn more?









Go to <https://hsrc.ac.za/about-cestii/measuring-innovation-capacity/agricultural-business-innovation-survey/>

# Support for innovation in South Africa\*

The South African government offers a variety of financial and non financial programmes, funds and incentives to promote innovation. These help firms of all sizes access diverse resources to support their product and process innovations.

## Your engagement matters.

\*As of March 2025

Programme/Sector   Website URL	Government support for innovation
<p>Agro-Processing Support Scheme (APSS)</p> <p> <a href="#">Click here</a></p>	<p>A cost-sharing grant to stimulate investment in agro-processing / beneficiation (agri-business) enterprises to increase capacity, create employment, modernise machinery and equipment, improve competitiveness and productivity, and broaden participation.</p>
<p>Aquaculture Development and Enhancement Programme (ADEP)</p> <p> <a href="#">Click here</a></p>	<p>A reimbursable cost-sharing grant towards the costs of machinery and equipment; bulk infrastructure; owned land or buildings; leasehold improvements; and competitiveness improvement activities in marine and freshwater enterprises including fish hatcheries and fish farms, and the production, processing and preserving of aquaculture fish.</p>
<p>Automotive Investment Schemes (AISs)</p> <p> <a href="#">Click here</a></p>	<p>To grow and develop the automotive sector through investment in new and replacement models and components to increase plant production volumes, sustain employment and strengthen the automotive value chain. It also offers a non-taxable cash grant for projects that include research and development.</p>
<p>Capital Projects Feasibility Programme (CPFP)</p> <p> <a href="#">Click here</a></p>	<p>Facilitates feasibility studies likely to lead to high-impact projects to stimulate value-adding economic activities, including strengthening the international competitiveness of South Africa's capital goods sector and allied industries.</p>
<p>Clothing, Textiles, Footwear and Leather Growth Programme (CTFLGP)</p> <p> <a href="#">Click here</a></p>	<p>Support and funding to grow employment, improve overall competitiveness and grow the clothing, textiles, footwear, leather and leather goods manufacturing industries.</p>
<p>Commercialisation Support Fund</p> <p> <a href="#">Click here</a></p>	<p>Prepares innovators for follow-on funding through limited support for market testing and validation.</p>
<p>CSIR Contract Research and Development</p> <p> <a href="#">Click here</a></p>	<p>Helps businesses and organisations deliver innovative solutions, in fields that include computer and information science, chemical sciences, biological and environmental sciences, engineering, nanotechnology and aeronautics, as well as medical and health sciences and agriculture.</p>
<p>Enterprise Incubation Programme (EIP)</p> <p> <a href="#">Click here</a></p>	<p>Funding for early stage entities to supply local markets.</p>

## Programme/Sector | Website URL

## Government support for innovation

European South African Science and Technology Advancement Programme (ESASTAP)



[Click here](#)

A collaborative initiative between South Africa and the European Union to strengthen ties in science, technology and innovation. A range of funding options for projects is sourced from South Africa's Department of Science and Innovation and the European Commission.

Export Marketing and Investment Assistance Scheme (EMIA)



[Click here](#)

Assisting the development of export markets for South African products and services and recruiting new foreign direct investment into the country, including improving companies' competitiveness by supporting patent registrations, quality marks and product marks.

Industry Innovation Support



[Click here](#)

The CSIR in collaboration with the Industry Innovation Partnership Fund gives participants access to large-scale prototyping and pre-commercial manufacturing infrastructure, equipment, expertise and access to business and technical networks. Research, development and innovation activities range from laboratory-scale validation to technology prototyping and pilot manufacture. Fields include biomanufacturing, nanomaterials, biorefining, mining, photonics and biocatalysis.

Innovation for Inclusive Development (IID)



[Click here](#)

The IID's Project Management Unit provides grant funding, technology development, IP support, business development support, and market access opportunities for grassroots innovators.

Innovation Skills Programme



[Click here](#)

Provides an enabling and innovation environment and training to build critical thinking competencies through access to international programmes and initiatives. Aims to support the progression of technologies from proof-of-concept stage to pre-commercialisation (technology readiness level 3–8).

Khoebo Innovation Promotion Programme (KIPP)



[Click here](#)

Enabling early stage innovative SMMEs to penetrate the market with locally developed innovations, specifically offering capital and business support in the early stages of commercialisation with particular emphasis on township and rural entrepreneurs, grassroots innovators and locally developed innovations.

Manufacturing Competitiveness Enhancement Programme (MCEP)



[Click here](#)

Loans to manufacturing companies to stimulate their competitiveness and ensure job retention in the sector.

Pre-commercialisation Support Fund



[Click here](#)

To support pre-commercialisation activities, e.g. market testing and validation of the technology in the potential customer environment, as well as bridging finance.

Research and Development Tax Incentive



[Click here](#)

Tax deductions offered under section 11D of the Income Tax Act (Act 58 of 1962). To be eligible a company of any size, in any sector of the economy, must engage in eligible R&D activities in South Africa. These must be approved by the Minister of Science and Innovation. At corporate tax rate of 28%, the incentive translates into 14 cents per Rand spent on R&D.

## Programme/Sector | Website URL

## Government support for innovation

Sector funding through TIA



[Click here](#)

To source investment and provide funding for innovative technology development and commercialisation in key areas in specific sectors including: waste management, water and mining products and services; the energy industry (renewable energy, energy storage, distributed generation and hydrogen fuel cells in particular); ICT products and services; and the advanced manufacturing industry.

Small Enterprise Development Agency (SEDA) Technology Programme (STP) – Incubation Programme



[Click here](#)

Supports technology and market validation, process and product development, small-scale manufacturing, market entry and market development.

Small Enterprise Development Agency (SEDA) Technology Programme (STP) – Quality Standards and Technology Transfer Fund



[Click here](#)

Provides funding to enhance the competitiveness and sustainability of small enterprise in South Africa by promoting quality and excellence as competitive tools for SMMEs.

Seed Fund



[Click here](#)

To assist with bridging finance to translate research outputs into fundable ideas for commercialisation (technology readiness level 3–8).

Small Enterprise Finance Agency (SEFA) Fund of Funds



[Click here](#)

A portion of the fund targets SMMEs in innovative sectors, including technology as well as new and emerging industries, typically with locally developed IP and technologies with significant potential to scale. Funding provided is mainly in the early stages of development as SMMEs progress through the technology readiness and commercialisation stages. This will also be used as a catalyst to attract second-round funding and support for industrialisation of large-scale R&D initiatives. Funding provided will be a combination of debt and equity.

Strategic Partnership Programme (SPP)



[Click here](#)

Develops and supports programmes or interventions aimed at enhancing the manufacturing and services capacity of suppliers with linkages to strategic partner supply chains, industries or sectors.

Support Programme for Industrial Innovation (SPII)



[Click here](#)

Provides financial assistance for the development of innovative products or processes, focussed specifically on the development phase, which begins at the conclusion of basic research and ends at when a pre-production prototype has been produced.

Technology Development Fund



[Click here](#)

Supports the development of technologies from proof-of-concept leading to product prototype and ultimately demonstration in an operating environment (technology readiness level 4–7).

Technology Platform Programme (TPP)



[Click here](#)

Creating and enabling access to life science infrastructure and services, supporting development and commercialisation of life science research projects, products and services, and accelerating the commercialisation and uptake of platform research projects and technologies (technology readiness level 3–7).

## Programme/Sector | Website URL

## Government support for innovation

Technology Innovation Cluster Programme



[Click here](#)

Supporting the creation of multi-disciplinary clusters along a technology development value chain with stakeholders fulfilling different functions: technology incubatory access and support, business incubatory access and support, and access to funding.

Technology and Human Resource for Industry Programme (THRIP)



[Click here](#)

A partnership programme of the dti that promotes collaboration between industry and academia and science councils, and enhances competitiveness in South African industries through new technology and skills generation.

Technology Stations Programme



[Click here](#)

A network of 18 centres with state-of-the-art equipment and experts in specialised fields located at universities of technology to provide science, engineering and technology services to SMMEs and entrepreneurs for product development, product improvement, prototype development and a range of other engineering services.

Technology Venture Capital (TVC)



[Click here](#)

Providing business support and seed capital for the commercialisation of innovative products, processes and technologies.

Youth Technology Innovation Programme



[Click here](#)

Creates and enables access to infrastructure and services, mentoring and incubation, to support development and commercialisation of youth-led technology enterprises. Assistance also for innovators not linked to any science council, higher education institution or small, medium and micro enterprise. Offerings include prototype development at TIA Technology Stations and Technology Platforms, IPP, testing and product certification, stipends towards establishing an enterprise, business coaching and incubation services.

## Survey Management Team

The Agricultural Business Innovation Survey 2022–2024 is performed by a team of specialist researchers and managers based in the Centre for Science, Technology and Innovation Indicators at the Human Sciences Research Council in partnership with Sigma Kairos Research and Consulting. Supported by dedicated field researchers, the survey team are committed to making sure each respondent's experience of completing the survey is smooth and efficient. Whether it's a phone call, email or tweet, we want to hear from you – and we'll do our best to attend to your question or comment as soon as we can.

**Your feedback matters.**

## CONNECT WITH US

🌐 WEBSITE:  
<https://hsrc.ac.za/about-cestii/measuring-innovation-capacity/agricultural-business-innovation-survey/>

✂ @BizInnovationSA

in <https://www.linkedin.com/company/cestii/>



**Dr Glenda Kruss**

Executive Head

✉ [gkruss@hsrc.ac.za](mailto:gkruss@hsrc.ac.za)



**Pilela Majokweni**

Chief Researcher

✉ [pmajokweni@hsrc.ac.za](mailto:pmajokweni@hsrc.ac.za)



**Gerard Ralphs**

Advocacy Lead

✉ [gralphs@hsrc.ac.za](mailto:gralphs@hsrc.ac.za)

☎ 021 466 8000



**Dr Yasser Buchana**

Project Lead

✉ [ybuchana@hsrc.ac.za](mailto:ybuchana@hsrc.ac.za)



**Mukovhe Glen Takalani**

Phd Research Trainee

✉ [GTMukovhe@hsrc.ac.za](mailto:GTMukovhe@hsrc.ac.za)